

## Oconto County

Population 38,000

1,017 Square Miles

375 Lakes

1,073 Stream Miles

2,228 Farm Operators (FSA)

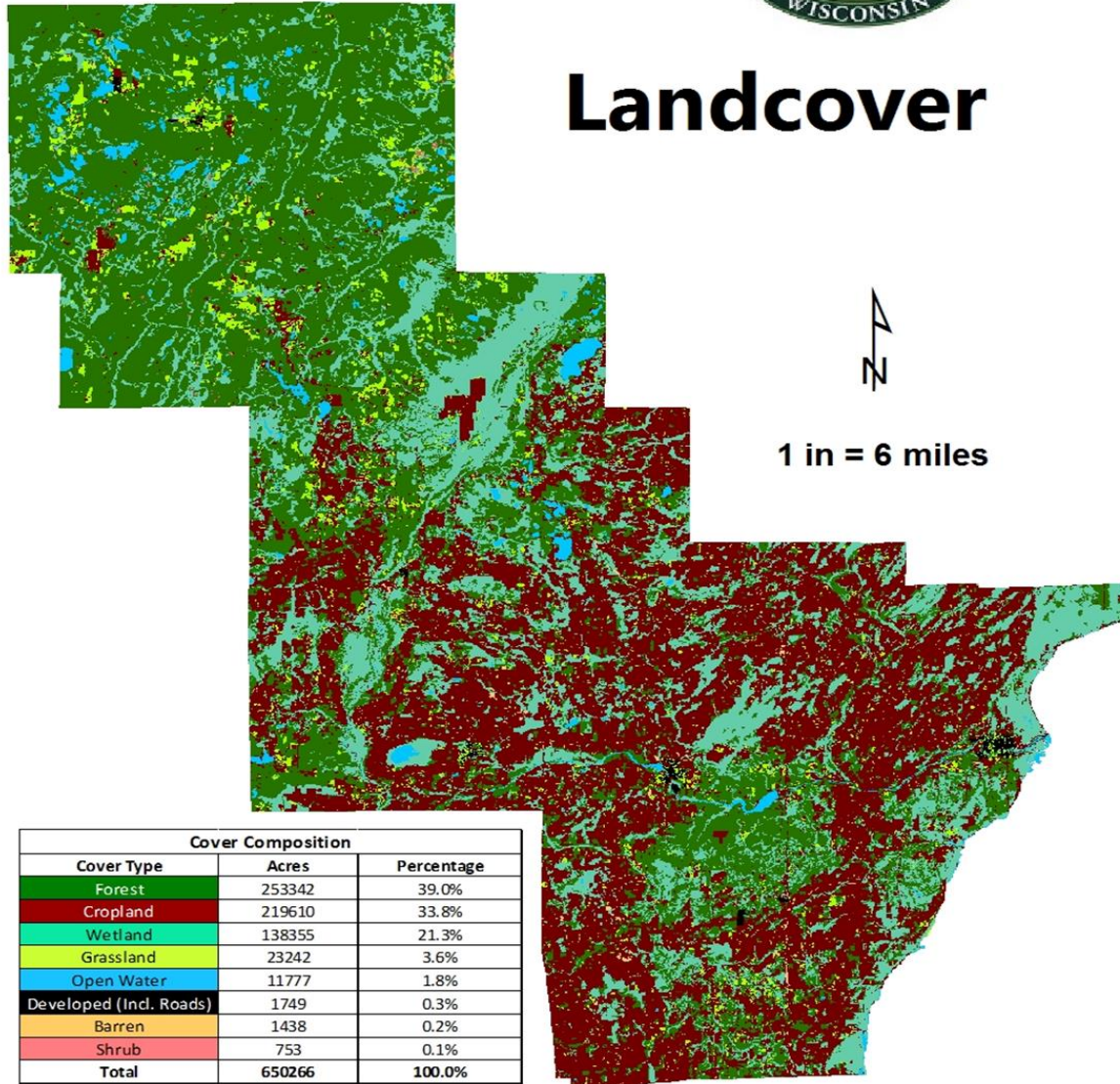
219,610 Cropland Acres

54,000 Cattle

# Oconto County



## Landcover



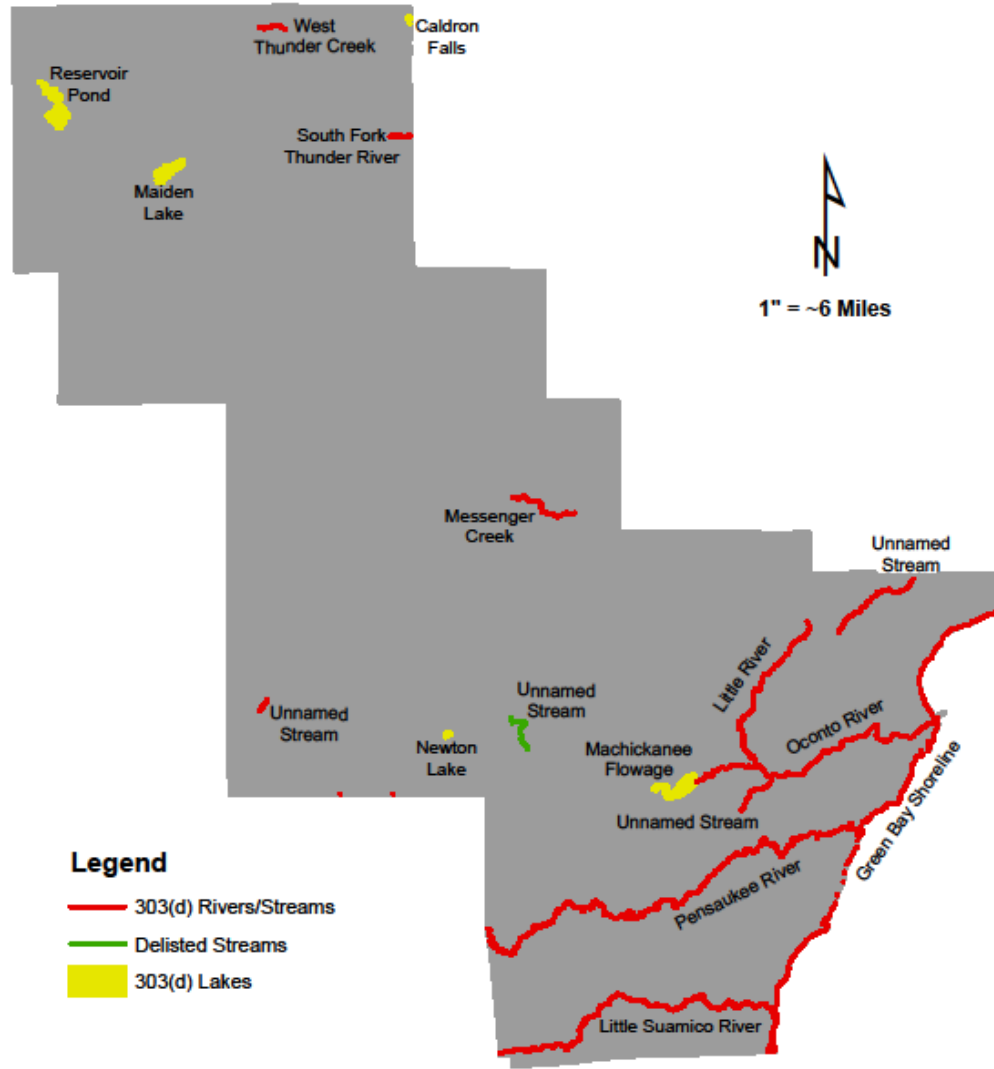
Cover Composition		
Cover Type	Acres	Percentage
Forest	253342	39.0%
Cropland	219610	33.8%
Wetland	138355	21.3%
Grassland	23242	3.6%
Open Water	11777	1.8%
Developed (Incl. Roads)	1749	0.3%
Barren	1438	0.2%
Shrub	753	0.1%
<b>Total</b>	<b>650266</b>	<b>100.0%</b>

25 Miles of Shoreline on the Bay of Green Bay

138,000 acres of wetland

Critical wetlands along the Bay of Green Bay

# Oconto County 303(d) Impaired Waters











07.25.2017





















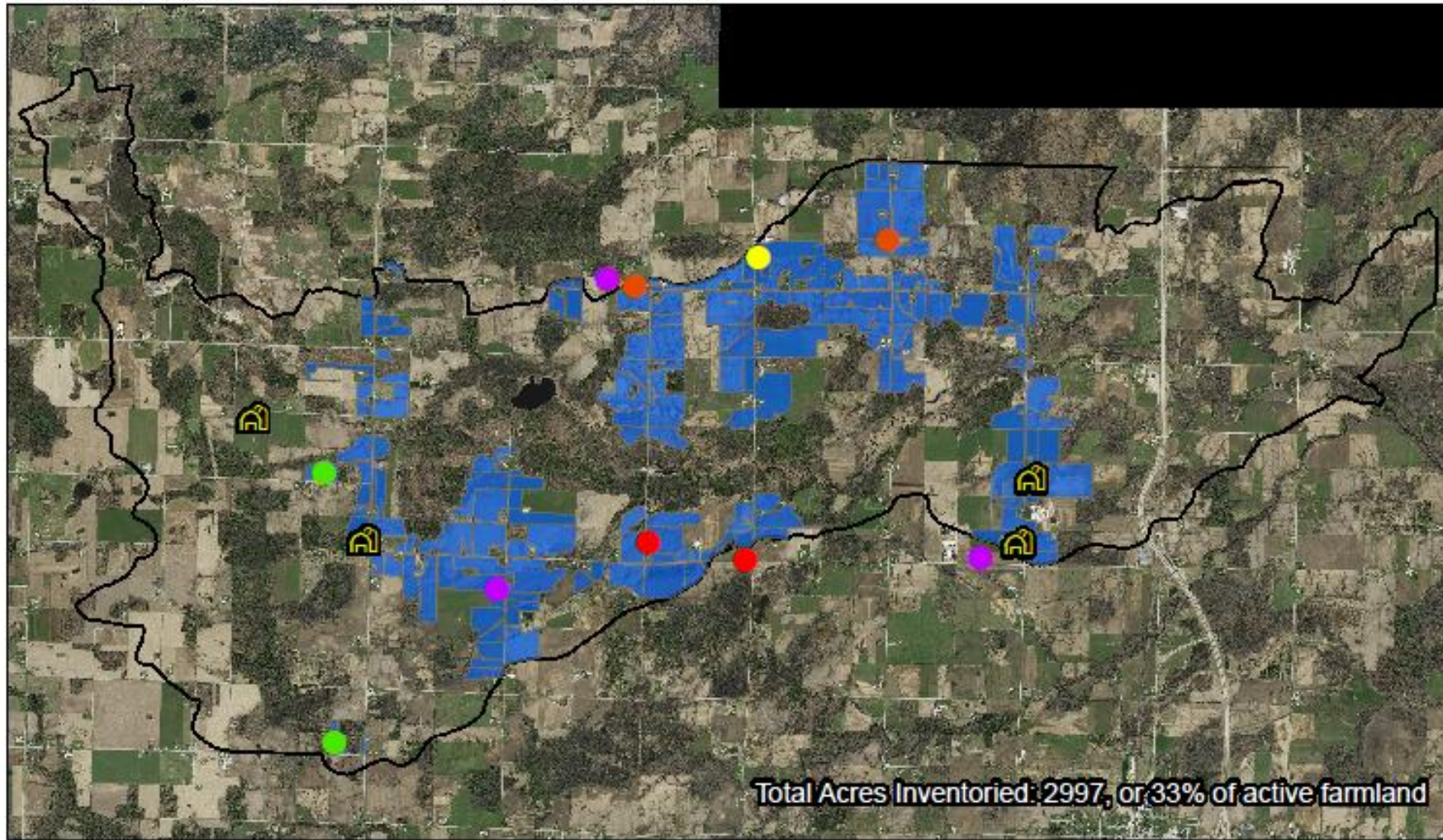


Currently 5 NOD/NOI's  
5 more sites being investigated





# Nation Water Quality Initiative: North Branch Little River Watershed

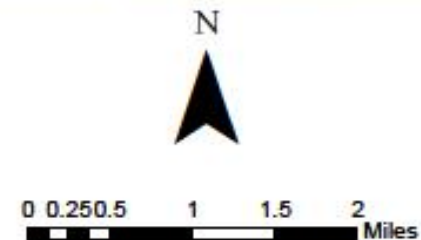


## Observations

- Poor drainage
- Sheet erosion
- Sediment in ditch
- Rill erosion
- Small gully

## Inventories

- 🏠 Farmsteads inventoried
- Fields inventoried





Activity	2015 Pre-Nutrient Management Review	2016 Year 1	2017 Year 2	Total
Management plans into which Best Management Practices (BMPs) were incorporated	1	33	4	37
Individuals demonstrating a minimum threshold of behavioral change	0	47	14	61
People targeted for technical assistance	0	102	14	116
Participants receiving cost share funds	0	10	13	23
New nutrient management plans	0	4	3	7
Phosphorus applications greater than UW recommended rate	1,217,000lbs of phos. over applied	10.3% decrease	6.7% decrease	approx. 205,000lbs
Total sediment loss overall the allowable "T" value	3,200 tons of soil loss each year	3,161 ton yearly decrease	626 ton yearly decrease	3,787 tons

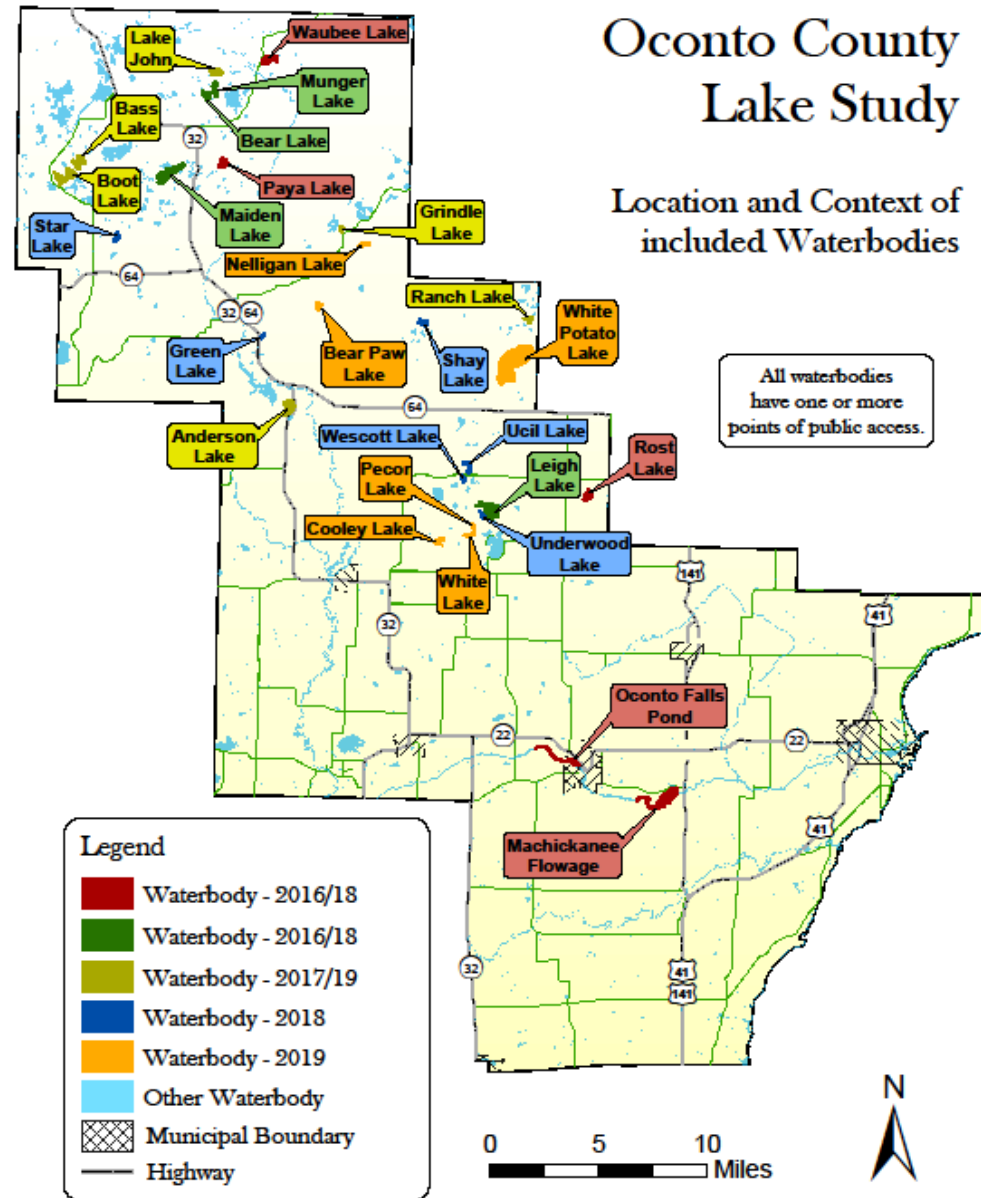
Red= Total over applications above UW recommendations and excessive soil loss documented within 2015 NMPs.

Blue= Reductions of sediment loss and phosphorus inputs. Phosphorus reductions resulted from voluntary management changes. Sediment reductions came from rotation management within SnapPlus and waterway installation.

**Reductions measured across 30 farms and approximately 45,000 acres**



60 lakes included in study.









57 Impediments corrected.

57.35 Stream miles opened.



10.23.2018



18.6 acres of wetland and  
critical areas restored.













Questions?